

World Food Park - Lot 2

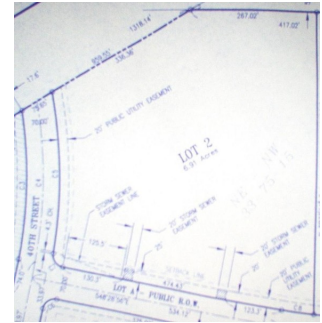
Available Acres: 6.91

Address:

World Food Avenue
Oskaloosa, IA 52577 (Mahaska County)

Property and Area Description:

A private industrial park south of Oskaloosa's Industrial Park. Sewer, water and electric to the lot. Ideal location for food processing industries.



Site Details:

Available Acres: 6.91	Adjacent Available Acres: 80
Topography: Flat	Setting: Single Site
Zoning: Industrial-Heavy	Within City Limits: Yes

Contact:

Jon Sullivan
Oskaloosa Area Chamber & Development Group
124 N Market Street
Oskaloosa, IA 52577
Phone: 641-672-2591
Fax: 641-672-2047
E-mail: jsullivan@oacdg.org

Transportation:

Nearest Interstate: I-80	Distance (miles): 30
Nearest 4-Lane Highway: State Hwy. 63 and 163	Distance (miles): 2
Nearest Commercial Airport: Des Moines International Airport	Distance (miles): 60
Rail Served: Yes	

Renee Lorenzen
World Food Processing Inc.
4301 World Food Avenue
Oskaloosa, IA 52577
Phone: 641-672-9651

Offering:

Sale Price:

Utilities:

Electric Distribution: MidAmerican Energy
Natural Gas Distribution: MidAmerican Energy
Water: Oskaloosa Municipal Water
Sewer: Oskaloosa Municipal Water
Local Telecommunications Service: Mahaska Communications Group, Qwest, MediaCom